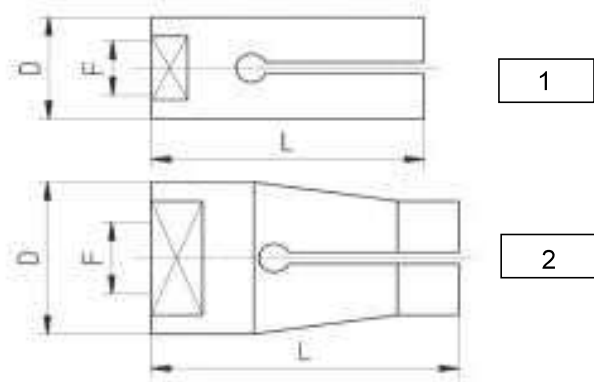


**BECHLER BAR FEED COLLETS  
PINCES DE RAVITAILLEUR BECHLER  
SPANNHÜLSEN FÜR BECHLER**

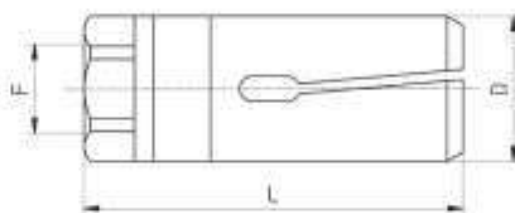


Ref.	Type/Typ	pic./Bild	D	L	F	max. cap./max. Kap.
1800	D 4,5	1	4,5	22	M2,5	3,5
1801	D 5	1	5	22	M3	4
1802	D 5,5	1	5,5	22	M3,5	4,5
1803	D 7	1	7	22	M4	6
1804	D 10	2	10	26	M5	8,5
1805	D 12	2	12	26	M5	10
1806	D 16 C	2	16	30	M6	14,5
1808	D 20 C	2	20	30	M8 x 1	18
1809	D 20 L	2	20	60	M8 x 1	18

dimensions in mm / dimensions en mm / Maße in mm

**CUCCHI BAR FEED COLLETS  
PINCES DE RAVITAILLEUR CUCCHI  
SPANNHÜLSEN FÜR CUCCHI**

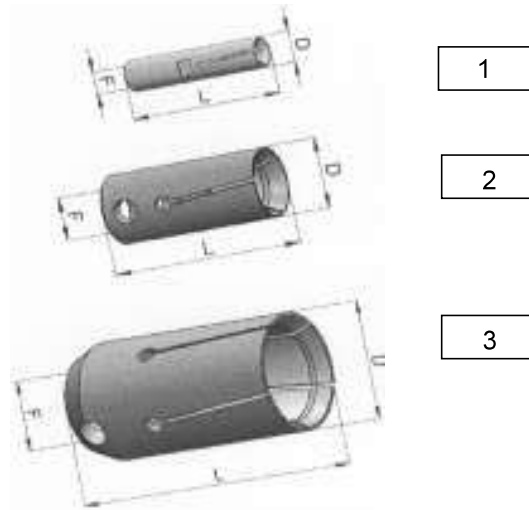
Ref.	Type/Typ	D	L	F	max. cap./max. Kap.
2045 E	D 10	10	40	M6 x 0,75	8
2061 E	D 12	12	42	M7 x 0,75	10
2101 E	D 15	15	42	M8 x 1	13
CUCD 16	D 16	16	42	M8 x 1	14
2197 E	D 20	20	59	M10 x 1	18
CUCD 25	D 25	25	60	M14 x 1	23
CUCD 30	D 30	30	65	M18 x 1,5	28
IAD 40	D 40	40	70	M25 x 1,5	36
IAD 46	D 46	46	72	M25 x 1,5	42



Ref.	Type/Typ		D	L	F	max. cap./max. Kap.
PB 1900	PB 19		19	60	M10 x 1 L	17
PB 2000	PB 20		20	60	M10 x 1 L	18
PB 2300	PB 23		23	60	M14 x 1 L	21
PB 2400	PB 24		24	60	M14 x 1 L	22
PB 2900	PB 29		29	65	M18 x 1,5 L	26
PB 3000	PB 30		30	65	M18 x 1,5 L	28
PB 3400	PB 34		34	65	M18 x 1,5 L	32
PB 3700	PB 37		37	70	M25 x 1,5 L	35
PB 3800	PB 38		38	70	M25 x 1,5 L	36

dimensions in mm / dimensions en mm / Maße in mm

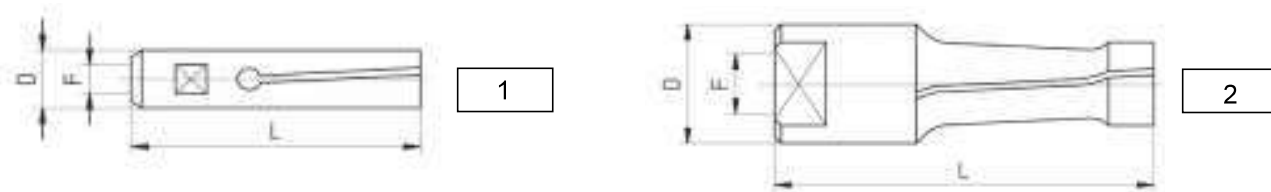
**FMB BAR FEED COLLETS  
PINCES DE RAVITAILLEUR FMB  
SPANNHÜLSEN FÜR FMB**



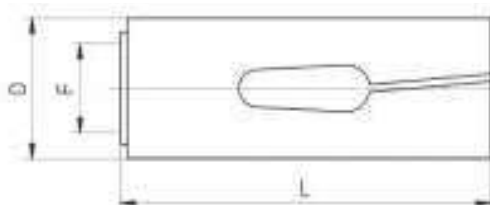
Ref.	Type/Typ	pic./Bild	D	L	F	max. cap./max. Kap.
208 E	D7	1	7	37	M5	5,5
210 E	D10	2	10	40	7	8
212 E	D12	2	12	40	8	10
203 E	D15	2	15	40	11	13
HAG D 16	D16	2	16	40	11	14
HAG D 18	D18	2	18	40	11	16
225 E	D20	2	20	65	14	18
222 E	D25	2	25	65	20	23
227 E	D28	2	28	65	20	25
HAG D 30	D30	3	30	65	20	27
HAG D 32	D32	3	32	65	20	29
HAG D 34	D34	3	34	65	20	31
HAG D 36	D36	3	36	65	20	33
HAG D 38	D38	3	38	65	20	35
HAG D 40	D40	3	40	65	20	37
HAG D 42	D42	3	42	65	20	39

dimensions in mm / dimensions en mm / Maße in mm

**IEMCA BAR FEED COLLETS  
PINCES DE RAVITAILLEUR IEMCA  
SPANNHÜLSEN IEMCA**



Ref.	Type/Typ	pic./Bild	D	L	F	max. cap./max. Kap.
2001 E	D7.5	1	7,5	40	M5 x 0,5	6
2045 E	D10	2	10	40	M6 x 0,75	8
2061 E	D12	2	12	42	M7 x 0,75	10
2101 E	D15	2	15	42	M8 x 1	13
2197 E	D20	2	20	59	M10 x 1	18
2289 E	D25	2	25	59	M10 x 1	23
IAD 27	D27	2	27	59	M10 x 1	25
2290 E	D30	2	30	59	M10 x 1	27
IAD 40	D40	2	40	70	M25 x 1,5	36
IAD 46	D46	2	46	72	M25 x 1,6	42



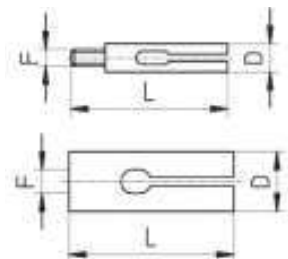
Ref.	D	L	F	max. cap./max. Kap.
7624	24	80	17 x 1	17 - 17.5
7625	25	80	17 x 1	18 - 18.5,5-19
7627	27	80	17 x 1	19.5-20-21-21.5
7629	29	80	25 x 1,5	22-22.5-23
7630	30	80	25 x 1,5	23,5-24,24,5-25
7632	32	80	25 x 1,5	25-26
7634	34	80	25 x 1,5	27-28
7636	36	80	25 x 1,5	29-30
7638	38	80	25 x 1,5	31-31.7-32-33
7640	40	80	25 x 1,5	34-35-35.5
7642	42	80	25 x 1,5	36-37
7644	44	80	25 x 1,5	38-39

Ref.	D	L	F	max. cap./max. Kap.
7646	46	80	25 x 1,5	39-40
7648	48	80	25 x 1,5	41-42
7650	50	80	25 x 1,5	43-44
7652	52	80	25 x 1,5	45-46
7654	54	80	25 x 1,5	47-48
7656	56	80	25 x 1,5	49-50
7658	58	80	25 x 1,5	51-52
7660	60	80	25 x 1,5	53-54-55-56
7665	65	80	25 x 1,5	57-58-59-60
7670	70	80	25 x 1,5	61-62-63-64-65-66
7675	75	80	25 x 1,5	67-68-69-70

dimensions in mm / dimensions en mm / Maße in mm

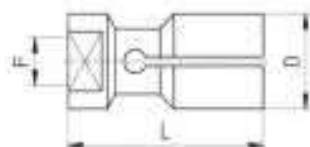
**TORNOS BAR FEED COLLETS  
PINCES DE RAVITAILLEUR TORNOS  
SPANNHÜLSEN FÜR TORNOS**

**TO**



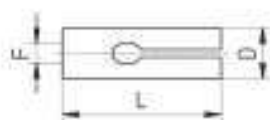
1

2

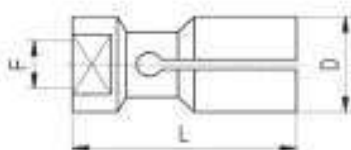


3

Ref.	Type/Typ	pic./Bild	D	L	F	max. cap./max. Kap.
1600	D4.5	1	4,5	24	M3	3,5
1601	D5.5	1	5,5	24	M3	4,5
1602	D7.5	2	7,5	30	M4	6,5
1603	D8.5	2	8,5	30	M5	7
1604	D10.5	2	10,5	35	M6	9
1605	D11	2	11	35	M6	9,5
1606	D12	2	12	35	M6	11
1607	D13.5	2	13,5	35	M6	12
1608	D15	2	15	35	M6	13
1609	D16.5	3	16,5	35	M8	15
1610	D20.5	3	20,5	35	M8	18



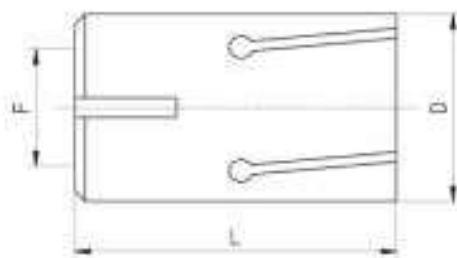
1



2

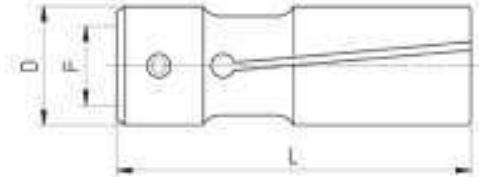
Ref.	Typ	obr.	D	L	F	max. kap.
1699	D8.5	1	8,5	35	M5 L	7
1700	D9.5	1	9,5	35	M6 L	8
1701	D10.5	1	10,5	35	M6 L	9
1702	D12	1	12	35	M6 L	11
1703	D15	2	15	35	M6 L	13
1704	D15.5	2	15,5	35	M6 L	14
1705	D16.5	2	16,5	35	M8 L	15
1706	D17.5	2	17,5	35	M8 L	16

dimensions in mm / dimensions en mm / Maße in mm

**TRAUB BAR FEED COLLETS  
PINCES DE RAVITAILLEUR TRAUB  
SPANNHÜLSEN FÜR TRAUB****TR**

Ref.	Type/Typ	D	L	F	max. cap./max. Kap.
TBD11	D11	11	50	M8 x 1	10
TBD14	D14	14	65	M10 x 1	13
TBD19	D19	19	65	M12 x 1	18
TBD21	D21	21	65	M12 x 2	20
TBD24	D24	24	65	M17 x 1	23
TBD28	D28	28	65	M17 x 1	26
TBD32	D32	32	65	M17 x 1	30
TBD34	D34	34	65	M25 x 1.5	32

dimensions in mm / dimensions en mm / Maße in mm

**TURBO BAR FEED COLLETS  
PINCES DE RAVITAILLEUR TURBO  
TURBO-SPANNHÜLSEN****TU**

Ref.	Type/Typ	D	L	F	max. cap./max. Kap.
TU D25	D25	25	90	20	23
TU D30	D30	30	90	20	27
TU D32	D32	32	90	20	29
TU D34	D34	34	90	20	31
TU D36	D36	36	90	20	33
TU D38	D38	38	90	20	35
TU D40	D40	40	90	20	36
TU D42	D42	42	90	20	38
TU D50	D50	50	90	20	46
TU D60	D60	60	90	20	55
TU D63	D63	63	90	20	59
TU D65	D65	65	90	20	61
TU D80	D80	80	90	20	74
TU D90	D90	90	90	35	82
TU D100	D100	100	110	35	90

dimensions in mm / dimensions en mm / Maße in mm